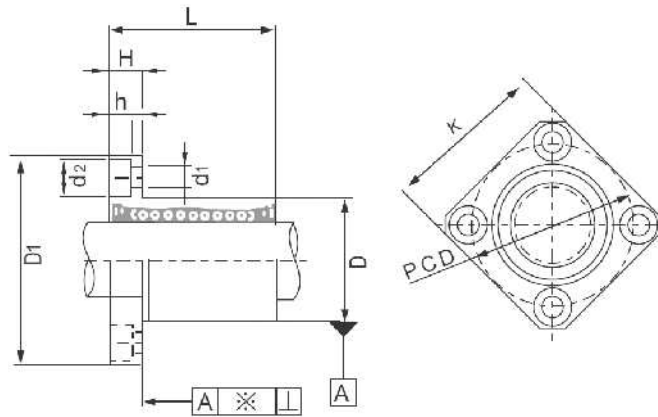


LMEK SERIES (EUROPE SERIES)



Type	Ball circuit	dr		D		L (±0,3)	D1	PCD	K	H	d1xd2xh	Eccentricity (max.)	Radial clearance (max.)	Load		Weight
		(mm)	(µm)	(mm)	(µm)									C	C0	
LMEK8UU	4	8	+8	16	0 / -11	25	32	24	25	5	3,5x6x3,1	12	-3	265	402	41
LMEK12UU	4	12	0	22	0	32	42	32	32	6	4,5x7,5x4,1		-4	510	784	80
LMEK16UU	5	16	+9	26	-13	36	46	36	35	6	4,5x7,5x4,1	15	-6	578	892	103
LMEK20UU	5	20	+1	32		45	54	43	42	8	5,5x9x5,1		-8	862	1370	182
LMEK25UU	6	25	+11	40	0 -16	58	62	51	50	8	5,5x9x5,1	20	-8	980	1570	335
LMEK30UU	6	30	-1	47		68	76	62	60	10	6,6x11x6,1		-13	1570	2740	560
LMEK40UU	6	40		62	0	80	98	80	75	13	9x14x8,1	25		2160	4020	1175
LMEK50UU	6	50	+13 -2	75	-19	100	112	94	88	13	9x14x8,1				3820	7940
LMEK60UU	6	60		90	0 / -22	125	134	112	106	18	11x17x11,1			4700	9800	3220