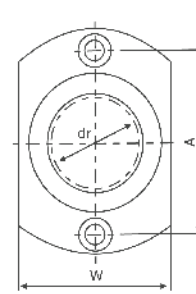
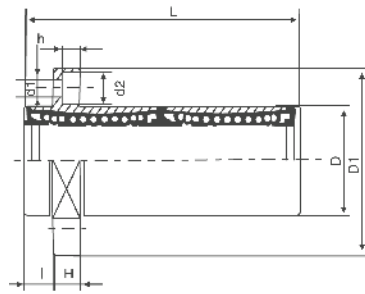
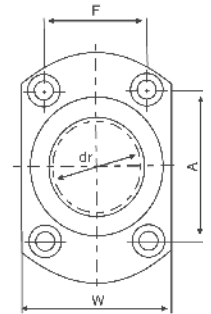


LMHP_L SERIES



LMHP 6L - 13L



LMHP 16L - 30L

Type	Ball circuit	dr		D		L (±0,3)	I	D1	W	H	A	F	D1xd2xh	Eccentricity (max.)	Load		Weight
		(mm)	(µm)	(mm)	(µm)										C	C0	
															(µm)	(mm)	
LMHP6LUU	4	6		12	0	35	5	28	18	5	20	-	3,5x6x3,1	15	323	529	28
LMHP8LUU	4	8		15	-13	45	5	32	21	5	24	-	3,5x6x3,1		431	784	47
LMHP10LUU	4	10	0	19		55	6	40	25	6	29	-	4,5x7,5x4,1		588	1100	90
LMHP12LUU	4	12	-10	21	0	58	6	42	27	6	32	-	4,5x7,5x4,1		813	1570	102
LMHP13LUU	4	13		23	-16	61	6	43	29	6	33	-	4,5x7,5x4,1		813	1570	123
LMHP16LUU	5	16		28		70	6	48	34	6	31	22	4,5x7,5x4,1		1230	2350	182
LMHP20LUU	5	20		32		80	8	54	38	8	36	24	5,5x9x5,1	20	1400	2740	247
LMHP25LUU	6	25	0	40	0	112	8	62	46	8	40	32	5,5x9x5,1		1560	3140	525
LMHP30LUU	6	30	-12	45	-19	123	10	74	51	10	49	35	6,6x11x6,1		2490	5490	645