

Joining elements

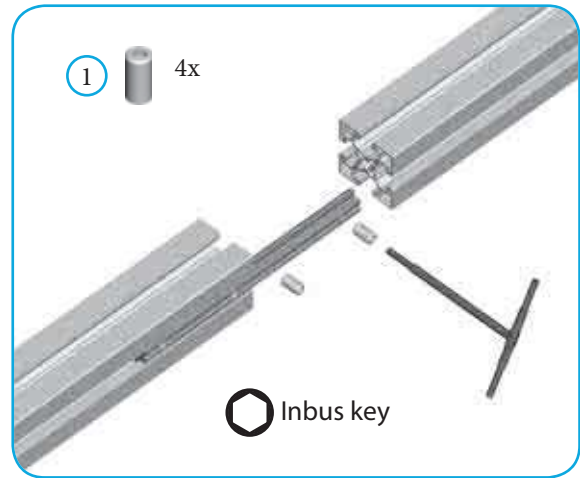
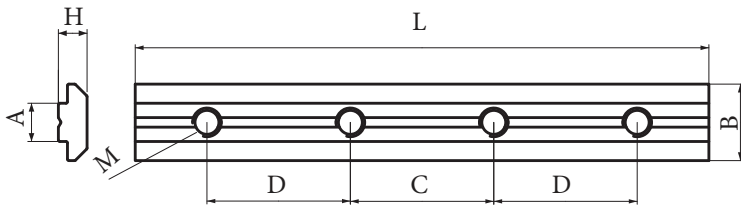
TRANSPORT LINES AND FLEXIBLE CONSTRUCTIONS IN AUTOMATION

Naziv
Description

Linearni spoj 120/180
Linear joint 120/180

Giunto lineare 120/180
Linear Profilverbinder 120/180

Descrizione
Beschreibung



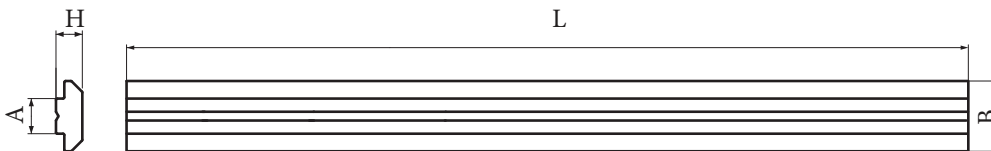
Zn Fe	8	L	M	A	B	C	D	H		Code
		120	6	8	16	30	30	6	63g	11083
Zn Fe	10	L	M	A	B	C	D	H		Code
		180	8	9,8	19,5	30	60	11	188g	11095
		Assembly components - sold separately								Code
8	①	Threaded insert M6x8					36	3	11031	
10		Threaded insert M8x14					36	4	11034	

Naziv
Description

Linearni spoj 1500
Linear joint 1500

Giunto lineare 1500
Linear Profilverbinder 1500

Descrizione
Beschreibung



Fe	8	L	A	B	C	D	H		Code
		1500	8	16	/	/	6	3000g	11094
Fe	10	L	A	B	C	D	H		Code
		1500	9,8	19,5	/	/	11	3000g	11096

Brez izvrtin - ni cinkan | Without bores - no zinc | Senza fori - non zincato | Ohne Lochen-nicht verzinkt