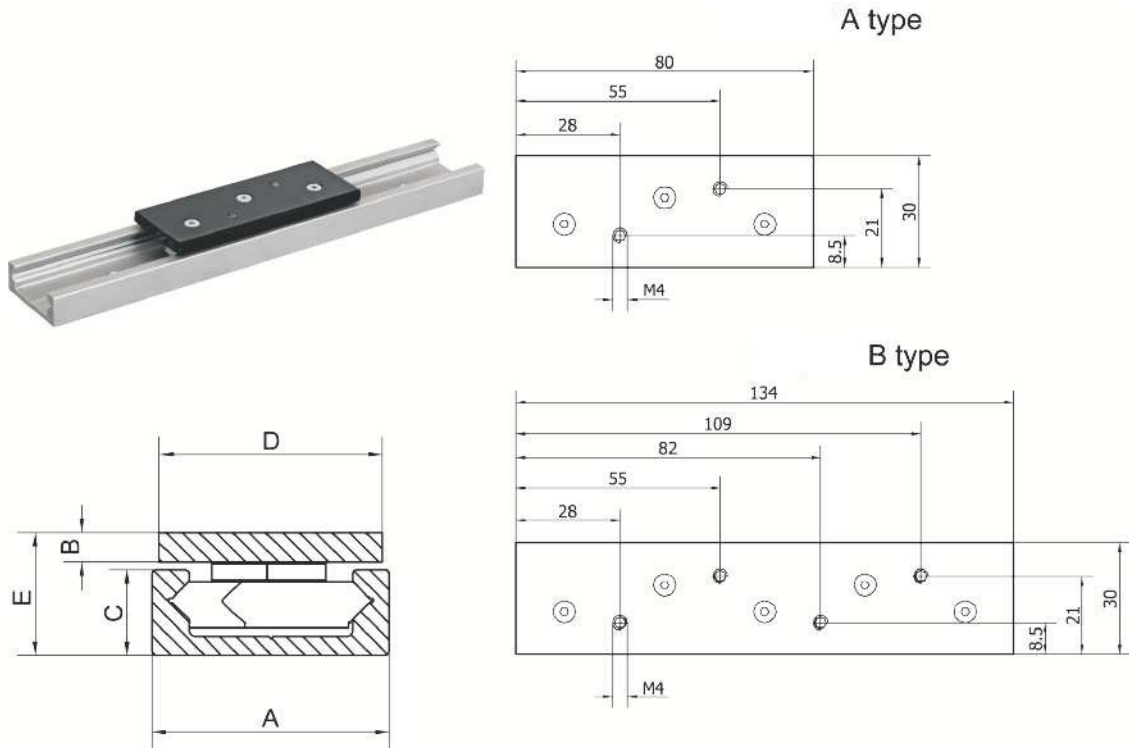


R LINEAR GUIDES

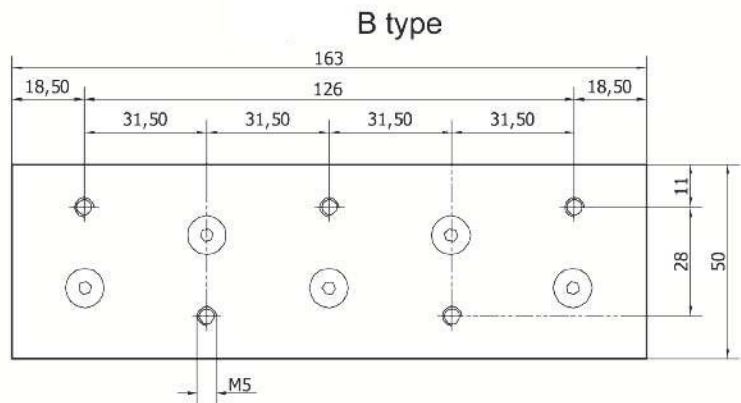
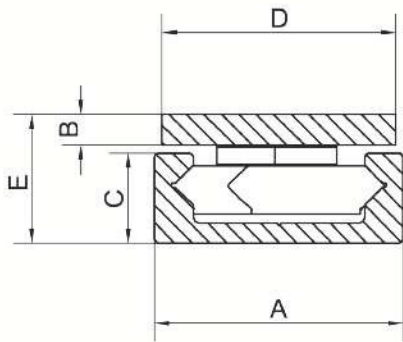
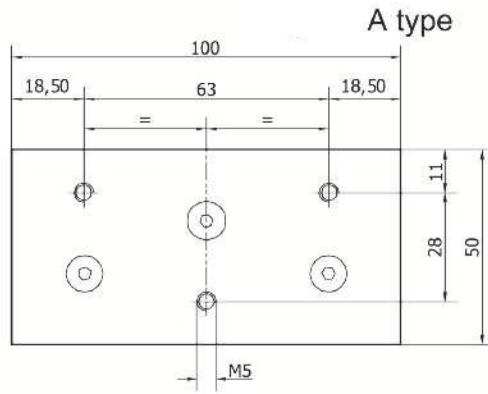
R32 TYPE



Code	Type	Type of block	A	B	C	D	E	Max length	Max load	Material	
			(mm)							(N)	Roller
RAIL											
89.001	R32-...	-	32	4	11,5	30	16,5	5000	-	-	Aluminium
BLOCK											
89.003	R32-A-AC	A	The dimensions see on the drawing					-	90	Steel	Aluminium
89.004	R32-A-DEL	A						-		Delrin	
89.005	R32-B-AC	B						-	140	Steel	
89.006	R32-B-DEL	B						-		Delrin	

Maximum working speed: 200-300 mm/s

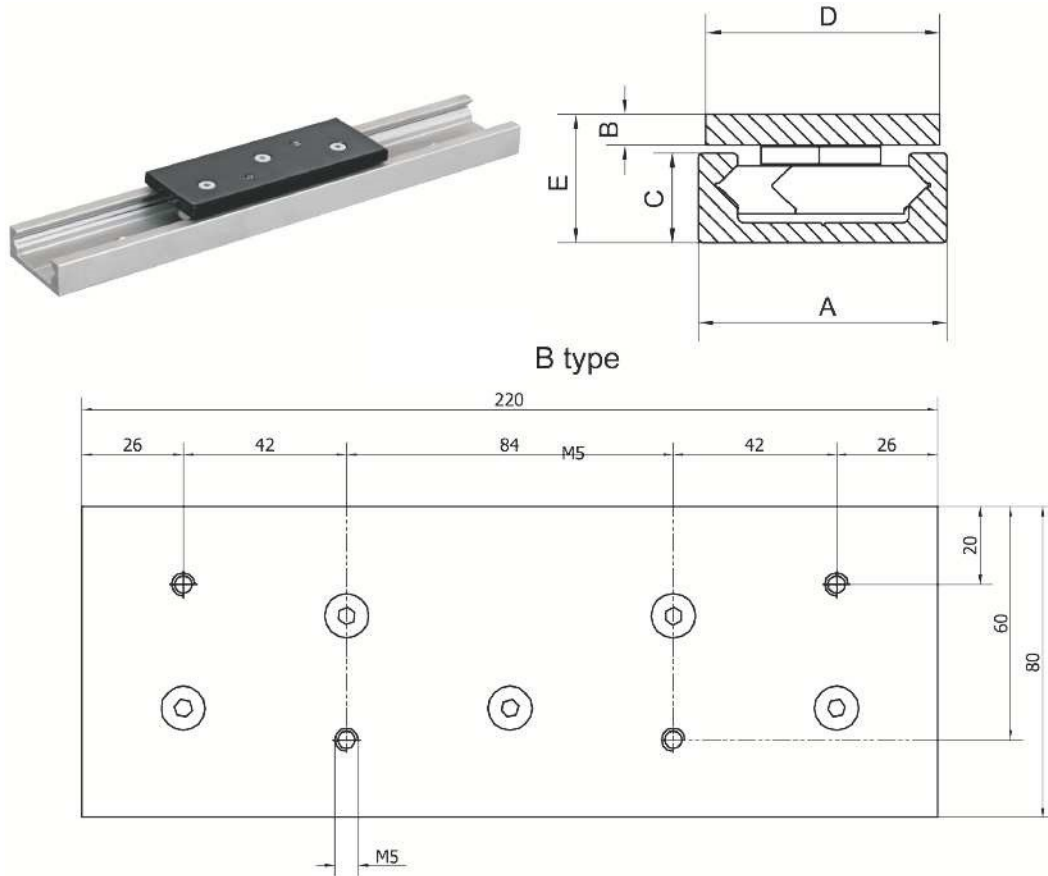
R52 TYPE



Code	Type	Type of block	A	B	C	D	E	Max length	Max load	Material		
			(mm)							(N)	Roller	Rail / block
RAIL												
90.001	R52-...	-	52	5	16	50	22	5000	-	-	Aluminium	
BLOCK												
90.003	R52-A-AC	A	The dimensions see on the drawing						-	280	Steel	Aluminium
90.004	R52-A-DEL	A							-		Delrin	
90.005	R52-B-AC	B							-	400	Steel	
90.006	R52-B-DEL	B							-		Delrin	

Maximum working speed: 200-300 mm/s

R80 TYPE



Code	Type	Type of block	A	B	C	D	E	Max length	Max load	Material	
			(mm)							(N)	Roller
RAIL											
84.096.001	R80-...	-	80	8	24,5	80	33,5	5000	-	-	Aluminium
BLOCK											
84.096.005	R80-B-AC	B	The dimensions see on the drawing					-	700	Steel	

Maximum working speed: 200-300 mm/s