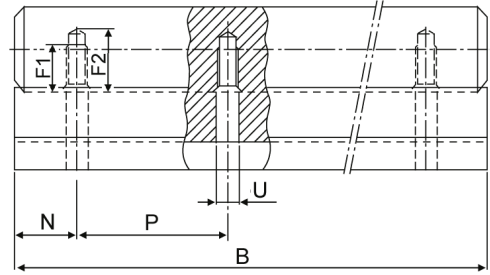
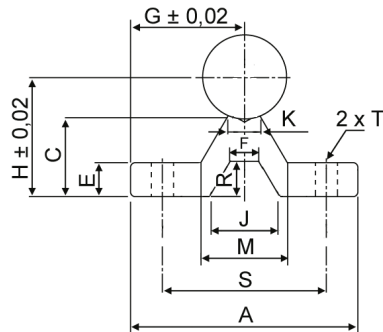


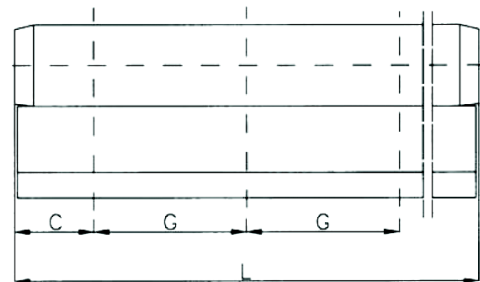
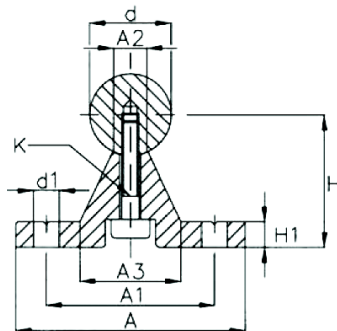
ROUND SHAFT WITH SUPPORT

SA TYPE



Type	Shaft Ø	H	C	E	G	A	S	J	M	F	R	K	T	B (max)	P	N	F1	F2	U	Weight
																				(kg/m)
(mm)																				
SA12	12	22,5	17,0	4	15	30	22	-	12	-	-	6	4,5	4000	150	20	6	9	M4	1,54
SA16	16	25	17,8	5	20	40	30	18	19	9	5,5	8	5,5	4000	150	50	8,5	13	M5	2,32
SA20	20	27	17,7	5	22,5	44	30	18	19	9	5,5	8	5,5	4000	150	50	10,5	15	M6	3,2
SA25	25	33	21	5,5	27,5	54	35	15	21,5	10	7,5	8	6,5	4000	200	100	11,5	18	M6	4,9
SA30	30	37	22,8	6	30	60	40	20	23,5	10	7,5	10	6,5	4000	200	100	15	20	M8	6,84

FTSN-GW TYPE



Type	Shaft Ø	A	H	A1	A2	A3	H1	d1	K	C	G	L max	Weight
													(kg/m)
(mm)													
FTSN-GW12	12	40	22	29	5,4	15	5	4,5	M4x20	To defined	75	6000	1,67
FTSN-GW16	16	45	26	33	7	19	5	5,5	M5x20		100	6000	2,95
FTSN-GW20	20	52	32	37	8,1	23	6	6,6	M6x26		100	6000	3,95
FTSN-GW25	25	57	36	42	10,3	26	6	6,6	M8x30		120	6000	5,6
FTSN-GW30	30	69	42	51	11	29	7	9	M10x30		150	6000	7,88
FTSN-GW40	40	73	50	55	15	36	8	9	M10x40		200	6000	12,83
FTSN-GW50	50	84	60	63	19	40	9	11	M12x45		200	6000	19,38

This product is the INA-TSNW; SKF-LRCB items compatible.